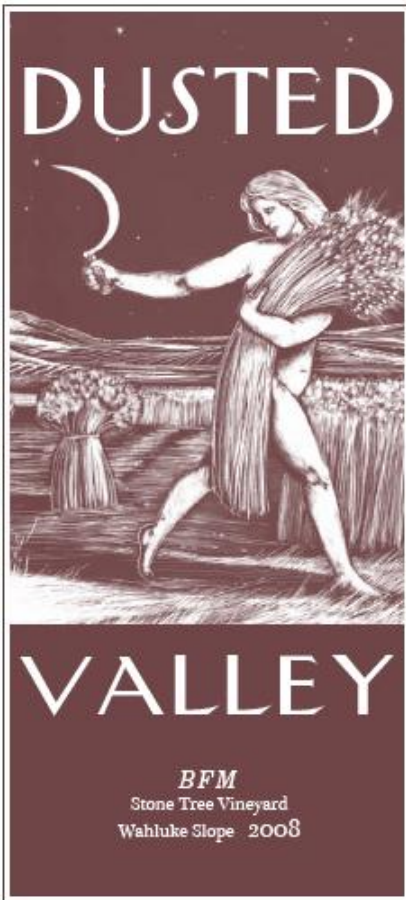


DUSTED VALLEY

TASTING ROOM & HEADQUARTERS

1248 Old Milton Hwy
Walla Walla, WA 99362
Tel/Fax: 509-525-1337
dustedvalley.com



NAME
2008 BFM

APPELLATION
Wahluke Slope

BLEND
72% Merlot, 20% Cabernet Sauvignon, 5% Petit Verdot, 3% Malbec

VINEYARD SOURCES
Stone Tree

WINE ANALYSIS
Total Acidity 6.3 grams/L
pH 3.82
Alcohol 15.3%

OAK PROGRAM
Aged 24 months in barrel 50% New Oak (70% extra tight grained Wisconsin, 30% French), 50% Neutral Oak

PRODUCTION UPC
250 Cases NA

RATINGS & AWARDS
2007 – 91 Points, *Wine Enthusiast*
2006 – 90 Points, *Wine Advocate*

WINEMAKER'S NOTES
You've heard about Washington Merlot right? This wine is no exception my friends. The BFM stands up to its reputation of being the biggest merlot based blend coming out of Washington today. We produce this wine for our wine club commonly known as the Stained Tooth Society. The STS members suck up about half of the total production with the remainder being allocated to our distributor network. Get on board and score some BFM!

